

First Presbyterian Church of Inverness

March 9, 2025

First Sunday in Lent



Prelude

Welcome

Introit

I Will Call Upon the Lord

Chancel Choir

-Gather-

Preparation for Worship

As you gather for worship this morning, take the opportunity to reflect on the meaning of Lent. This is a time when we join Christ on the journey to the cross. We begin by hearing of Jesus' time of fasting, prayer, and temptation in the desert. Is God calling you to fast from something during Lent so you can spend more time in prayer for yourself and others? Is there time in your daily or weekly schedule that could be filled by reading a devotional and scripture instead of something else? Perhaps you might find time to write a note or make a phone call to someone who needs to hear from you. How is Christ calling you to make room for him this Lenten season?

Opening Sentences

You who live in the shelter of the Most High, say to the Lord:

My refuge and my fortress; my God, in whom I trust.

For God will protect us from evil and commands angels to guard us in all our ways.

God rescues those who love God and is present with us in trouble.

God answers when we cry out and reveals our salvation to us.

Let us worship God!

Prayer of the Day

Mighty God, you heard the cries of your people and rescued them from the hand of their oppressors. You cared for them in the wilderness. In the life of Christ, you experienced that wilderness yourself. As we journey through our own wilderness, we give thanks that your Spirit sustains us and your love guides us. Amen.

*Hymn #292

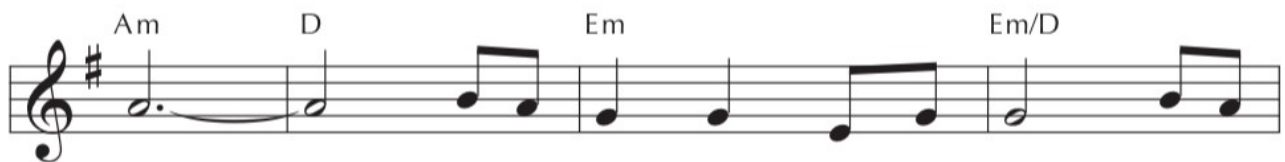
As the Wind Song



1 As the wind song through the trees, as the
 2 As the rain - bow af - ter rain, as the
 1 風 之 頌, 林 中 吹 送, 輕 風
 2 彩 之 虹, 雨 後 高 懸, 生 之



stir - ring of the breeze, so it is with the Spir - it of
 hope that's born a - gain, so it is with the Spir - it of
 送, 心 中 振 動, 上 主 的 靈 如 風 吹
 盼, 人 間 再 現, 上 主 的 靈 如 風 吹



God, as the heart made strange-ly warm, as the
 God, as the green in the spring, as a
 送; 心 溫 暖, 奇 異 難 明, 風 浪
 送; 春 天 裡, 青 山 綠 水, 線 上



voice with - in the storm, so it is with the Spir - it of
 kite on a string, so it is with the Spir - it of
 中, 靜 聽 主 聲, 上 主 的 靈 如 風 吹
 繫 飛 揚 風 箏, 上 主 的 靈 如 風 吹



God. Nev - er seen, ev - er known where this wind has
 God, mak - ing worlds that are new, mak - ing peace come
 送; 眼 不 見, 心 未 明, 風 來 去 何
 送; 大 地 萬 象 更 新, 和 平 終 實



blown bring-ing life, bring-ing power to the world,
 true, bring-ing gifts, bring-ing love to the world,
 蹤, 給 世 人 賜 生 命 加 力 量;
 現, 給 世 人 帶 來 愛 和 禮 物;



as the danc - ing tongues of fire, as the soul's most deep de -
 as the ris - ing of the yeast, as the wine at the
 火 之 舌, 跳 動 飛 舞, 心 深 處, 朝 思 暮
 麵 之 酵, 悄 然 膨 升, 盛 宴 上, 醇 香 美



sire, so it is with the Spir - it of God.
 feast, so it is with the Spir - it of God.

Confession

The journey of life inevitably leads to wilderness, times marked by guilt, frustration, and the sense that we are not in the right place. But even in the wilderness, God is with us. Even in the wilderness, God's mercy is sure.

As Lent unfolds before us, great God, we see how far we have to go to Jerusalem. The road is long, our sins are many, and our burdens are heavy. We can't imagine new life, Easter life, because our current lives are filled with bad choices and failed efforts. Meet us in our weakness. Take up our sins. Ease our burdens. Carry us on the way. Bring us to Jerusalem, at last. Show us a love that is stronger than death, a love no tomb can hold. (silent confession) Let all God's children say, Amen.

Pardon

Walking this earth, facing temptation, defeating sin, Jesus has done for us what we could never do for ourselves. This is good news!

In Jesus Christ we are forgiven!

***Pass Christ's Peace**

***Praise # 635**

Sing Praise and Bless the Lord

Sing, praise, and bless the Lord. Sing, praise, and bless the Lord.
Lau - da - te Do - mi - num, lau - da - te Do - mi - num,

Peo - ples! Na - tions! Al - le - lu - ia!
om - nes gen - tes, al - le - lu - ia!

Sing, praise, and bless the Lord. Sing, praise, and bless the Lord.
Lau - da - te Do - mi - num, lau - da - te Do - mi - num,

Peo - ples! Na - tions! Al - le - lu - ia!
om - nes gen - tes, al - le - lu - ia!

Children's Sermon

Lori Wolford

Prayers of the People and the Lord's Prayer

Have mercy, O God; **hear our prayer.**

Anthem

How Beautiful

Chancel Choir

— Word —

Prayer for Illumination

Scripture

Old Testament

Deuteronomy 26:1–11

Epistle

Romans 10:8b–13

Gospel

Luke 4:1–13

Sermon

Fast

Rev. Lou Ellen Hartley

***Affirmation of Faith**

Traditional Apostles' Creed

***Dedication of the Offering**

*Hymn #694

Great God of Every Blessing

1 Great God of ev - ery bless - ing, of faith - ful, lov - ing care,
2 Your Word is our sal - va - tion, the source of end - less grace,
3 Your Spir - it is our teach - er, the light that guides our search,

you are the fount of good - ness, the dai - ly bread we share.
in death and life ex - tend - ing your cov - e - nant em - brace.
trans - form - ing bro - ken peo - ple in - to the ho - ly church.

How can we hope to thank you? Our praise is but a start:
In Christ we are one bod - y; each mem - ber has a part:
For feed - ing us with mer - cy, for wis - dom you im - part:

sin - cere - ly and com - plete - ly I of - fer you my heart.

*Blessing and Charge

*Postlude

Church Staff and Contact Information
Church Office 352-637-0770, fpcinoffice@gmail.com

Lou Ellen Hartley, Pastor – revhartley1000@gmail.com
Lori Wolford, Dir. of Outreach & Christian Education, dcelori.fpc@gmail.com
Lesa Shelton, Volunteer Choir Director Marina Veiler, Pianist/Organist
Danny Birstler, Sound Booth Coordinator Vicki Oorbeck, Child Care Attendant
Laura Morrow, Office Administrator Bruce Cook, Prayer Warrior
Danny Sullivan, Facilities Manager Gary Oorbeck, Grounds |Maintenance |Security
Treasurer Email: fpcinvFinance@gmail.com

Church Office Hours

9:30 a.m. - 1:30 p.m. Monday - Thursday
Closed on Friday

Our Elders

Class of 2025: Jerry Reynolds, Leah Robinson, Keith Spong
Class of 2026: Barbara Caudill, Bruce Cook, John Morrison, Lesa Shelton
Class of 2027: Caryl Birstler, Clark Stillwell, Lynnette Strickland

Our Deacons

Class of 2025: Pedro Fuentes, Amanda Morrison
Class of 2026: Ray Birstler, Donna Dublo, Toni Scott
Class of 2027: Terri Christoffers, Jacob Gleason, Ron Shafer

WORSHIP FLOWERS

Today, worship flowers are given anonymously.
May this Lent season bring you closer to Our Father.

Nursery and Sunday School for All Ages

Infants and Pre-K	CE Hall, Room 2	Ms. Vicki
Elementary (K-5)	CE Hall, Room 4	Ms. Mary Beth
Adult Sunday School	Library	Pastor Lou Ellen Hartley
Secondary/Youth Group (6-12)	CE Hall, Room 5 5:30 p.m.	Ms. Lori, Mr. Ron



SPECIAL OFFERINGS

ONE GREAT HOUR OF SHARING

We will be taking up the One Great Hour of Sharing Offering on Easter Sunday. This special offering of the PC(USA) is used to support three key ministries of the church: Presbyterian Disaster Assistance, The Presbyterian Hunger Program, and the Self-Development of People. In order to prepare for the offering, you can find prayer calendars the Ask Me Desk or at this link to the PC(USA) web site:

<https://pcusa.org/sites/default/files/202412/OGHS25%20childrens%20calendar%208.5x11%20web.pdf>. These prayer calendars highlight the ways in which the offering is used, lifts up prayer concerns, and raises awareness. Please be sure to check it out!

ADULT SUNDAY SCHOOL IS STUDYING THE PSALMS FOR LENT

Join us in the Library through Lent as we study the Psalms associated with the season. Pastor Lou Ellen is teaching the class using the book, *Pause*, by Dr. Elizabeth Caldwell.

GATHERED UP!

Is meeting every Sunday at 5:30 for worship and a potluck dinner. Join us for a time of casual and interactive worship. As we move through Lent, we will be trying different ways of engaging scripture through the arts, prayer, and movement. Join us and be sure to invite a friend.

CUB UPDATE

Thank you to everyone who participated in the Souper Bowl food drive. We sent 245 pounds of food over to Citrus United Basket! **This month, they need spaghetti sauce, cereal, and tuna Hamburger Helper.** If you would like to contribute to this mission, there is a spot for CUB in the new cabinet/sign-up desk in the narthex.

WORSHIP FLOWERS – DATES AVAILABLE IN APRIL

If you would like to honor someone special by ordering worship flowers for the Sanctuary, we have several Sundays open in April. Two arrangements are just \$37.00. Sign up at the Ask-Me-Desk and drop your check in the offering plate. Be sure to note “Worship Flowers (date)” on the memo line of your check.

FELLOWSHIP COMMITTEE ANNOUNCEMENTS

The Cahal Dunne Concert that was schedule for March 16th is cancelled. However, we are having a St. Paddy’s Dinner following the 11:00 a.m. service on the 16th. We are serving cottage pie (shepherd’s pie with beef) and strawberries for dessert. If anyone would like to bring something to go with them, that would be great!

PUZZLE TABLE UPDATE

Thank you to everyone who donated and enjoyed the puzzle table. Just as all good things must come to an end, so has the puzzle table. The remaining puzzles have been donated to the Citrus County Library System to be sold at their next book sale. All proceeds from those sales go to buy new books to support the literacy of Citrus County residents. Our youth are happy to be helping share the joy of reading through this donation. Thank you again to everyone who participated.

OPPORTUNITY FOR SERVICE

The Session is looking for someone to coordinate the *Operation Christmas Child* program in our church. This is the Christmas shoebox ministry we have done for a number of years. If you are interested in coordinating the program, please contact the church office or email the pastor at revhartley1000@gmail.com. Thank you!

THIS WEEK AT FPC

Sunday, March 9, 2025

Adjust Your Clock-Spring Forward One Hour

- 9:00 Adult Sunday School-Library
- 10:00 Worship Service - Sanctuary
- 10:00 Children's Sunday School-CE Wing
- 5:30 Anchored
- 5:30 Gathered Up Service – FH

Monday, March 10, 2025

- 5:30 Boy Scouts

Tuesday, March 11, 2025

- *8:30 Blessings
- 10:00 Prayer Gathering – Parlor
- 11:00 Choir Rehearsal – Sanctuary

Wednesday, March 12, 2025

- *8:30 Blessings
- 9:00 Staff Meeting

Thursday, March 13, 2025

- 8:30 Blessings
- 10:00 Thursday Bible Study – Library
- 11:00 Fellowship Committee - FH
- 12:00 – 3:00 Craft Group – Youth Room

Friday, March 14, 2025

- 9:00 – 5:00 GFWC Women's Club Set-up - FH

Saturday, March 15, 2025

- * 9:00 – 5:00 GFWC Women's Club
- *10:00 -11:30 CCCC Rehearsal – Sanctuary

Sunday, March 16, 2025

- 9:00 Adult Sunday School-Library
- 10:00 Worship Service - Sanctuary
- 10:00 Children's Sunday School-CE Wing
- 11:00 Worship Committee
- 11:00 St. Paddy's Dinner – FH
- 5:30 Anchored - Packing with Blessings
- 5:30 Gathered Up Service – FH

*Outside Group

FH = Fellowship Hall

A SPECIAL

Thank You

TO THOSE SERVING TODAY

Ushers

Russ Hackett



Please Mark Your Calendars

Donald Martin Black

Celebration of Life

Friday, March 21, 2025

11:00 AM

First Presbyterian Church of Inverness



Paul A. Perregaux

Celebration of Life

Saturday, March 22, 2025

2:00 PM

First Presbyterian Church of Inverness